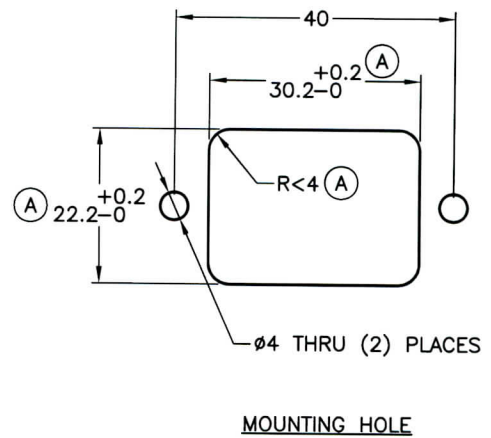
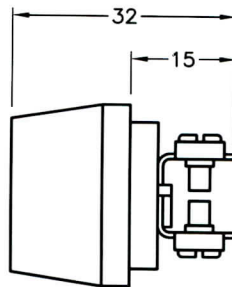
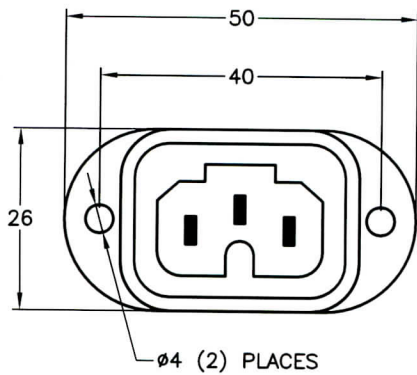


APPROVALS

CSA VDE

(B)

ALL DIMENSIONS ARE IN MILLIMETERS



SPECIFICATIONS

TEMPERATURE RATING	155°C (311°F)
CURRENT RATING	10 AMPERE
VOLTAGE RATING	250 VOLT AC
CONTACTS	2 POLE 3 WIRE GROUNDING
STANDARD	DIN 49458
MATERIALS	-PLASTIC BODY
REMARKS	-SURFACE MOUNT -SCREW TERMINALS
NOTE	SPECIFICATIONS SUBJECT TO CHANGE WITHOUT NOTICE

**National Plastic Heater
Sensor and Control Inc.**

TITLE
HEATER INLET CONNECTOR, SURFACE MOUNT, SCREW
TERMINALS

SCALE NONE	DATE 09-27-2006	PART NO. 111-10205	REV B
---------------	--------------------	-----------------------	----------